

Thank you for purchasing a set of custom PACS Pro Earplugs.

Our earplugs are designed for comfort and effectiveness. The custom mold ensures a secure fit and excellent noise reduction rating. We used only the highest quality materials to create your earplugs to last for years of frequent use.

Although your product has undergone several quality checks, please ensure the filters are placed in the earplugs correctly, and the earplugs fit properly (see manual below).

If you are missing any items, have any questions or need assistance with your new earplugs, please do not hesitate to contact us. We hope you enjoy and benefit from your custom PACS Pro Earplugs. Thank you again for choosing Pacific Ears.

Included in your order are the following items:



Your earplugs come with one set of filters. Every filter has its own unique color as shown in the table below:

Pro10	Pro15	Pro17	Pro20	Pro26	Pro27	Pro31	Pro Impact	Pro Impact Switch
								

For instructions on how to insert/remove your earplugs, or how to clean them, please click here (<https://www.youtube.com/@pacificears>).



PACS Pro with removable cord



PACS Pro with grip and removable cord

CARE & MAINTENANCE OF YOUR HEARING PROTECTORS

It is important that you read these notes to ensure longevity of your custom hearing protectors. Failure to care for them in accordance with these instructions could severely impair their performance.

Use a clean moist cloth or sterile wipe to clean the earmoulds. Visually inspect each earpiece to check that no earwax, skin debris or dirt has penetrated the sound ducts. Use the provided wire loop to carefully remove any foreign matter. Always return to the carry case when not in use. Keep away from moisture, heat or direct sunlight. **DO NOT** immerse the filters in any liquids.

The filter can be removed by gently squeezing the earmould around the filter until it 'pops' out so the earmoulds can be thoroughly cleaned in warm, soapy water. After cleaning ensure the earmoulds are completely dry before reinserting the filters. When replacing the filters ensure that the logo is visible on the outside of the earpiece. If your hearing protectors incorporate electronic components, do not immerse them in any liquids. Certain chemical substances can adversely affect this product. Further information should be sought from the manufacturer.

NB: We recommend replacement of your hearing protectors every four years due to anatomical changes to the shape of the ear canal.

PACS PRO Series & PRO Communicator Series Reusable Hearing Protectors

Model	SNR	H	M	L
PRO10*	10	10	6	7
PRO15	15	14	13	12
PRO17	17	16	16	16
PRO20	20	21	18	16
PRO26/PRO26 communicator	27	26	25	25
PRO27/PRO27 communicator	27	27	24	23
PRO IMPACT 15	15	19	12	7
PRO IMPACT 19	19	22	16	13
PRO IMPACT SWITCH	25	27	22	20
PRO 31	31	30	28	28

*Pro10 deliberately does not meet the minimum attenuation of 12dB above 1KHz that is a requirement of the EN352-2 standard; it is therefore not tested or certificated under this standard

H: Average attenuation characteristics in high frequency spectrum (> 2kHz)

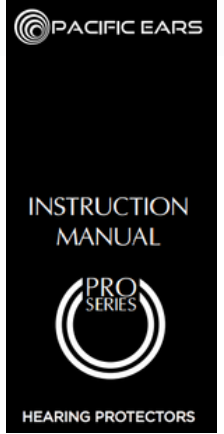
M: Average attenuation characteristics in mid frequency spectrum (0.5-2kHz)

L: Average attenuation characteristics in low frequency spectrum (<0.5kHz)

SNR (Single Number Rating): Average attenuation characteristics in the standard frequency spectrum.

Attenuation was determined in accordance with EN352-2:2002

PRO IMPACT 15/19/SWITCH peak level (dB)	130	150	158	166
Impulse peak insertion loss (dB)	25	32.6	33.2	33.8



For the online manual: pacificears.com/instructions

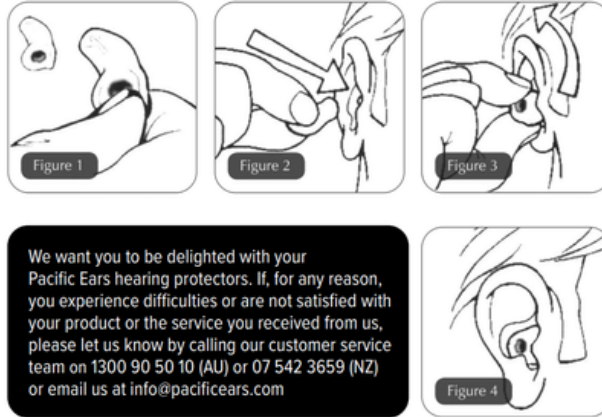
Fitting guide

Each of your hearing protectors is marked with red or blue logo. The RED marked earpiece fits in your RIGHT ear and the BLUE marked earpiece fits in your LEFT ear.

Hold the earpiece as shown in fig 1 and insert into the ear canal twisting it backwards while applying slight pressure as shown in Fig 2 & Fig 3. Press the earpiece until it fits comfortably in your ear as shown in Fig 4.

Where your protectors are fitted with grips, hold the grips when inserting the earpieces. To remove, grip the earpiece and twist in a forward motion while pulling gently away from the ear. NEVER remove by pulling on the (optional) neck cord or cable (communicator variant only)

The supplied comfort cream can help with insertion by spreading a small amount on the tip of the earpiece before inserting.



We want you to be delighted with your Pacific Ears hearing protectors. If, for any reason, you experience difficulties or are not satisfied with your product or the service you received from us, please let us know by calling our customer service team on 1300 90 50 10 (AU) or 07 542 3659 (NZ) or email us at info@pacificears.com



www.pacificears.com | info@pacificears.com

AU: info@pacificears.com.au 1300 90 50 10 NZ: info@pacificears.co.nz 07 542 3659



For a fitting or cleaning demonstration please visit our YouTube channel.



Correctly Fitted Earplug:

- Handgrip at the top
- Logo parallel to the face (not visible)
- Earplug fully inserted
- Left earplug in left ear

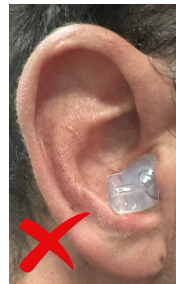
Incorrectly Fitted Earplugs:



- Handgrip not at the top
- Earplug is inserted crosswise instead of straight
- Earplug not fully inserted



- Left earplug inserted into the right ear
- Blue logo is for Left ear
- Red logo is for Right ear



- Earplug is inserted with the wrong end first
- Canal piece is sticking out

If you have any fitting issues or questions and would like advice, feel free to email us on info@pacificears.com, and please include a couple of photos of the earplugs **in** your ears.